

STROM™ CYLINDER

PROJECT: _____

TYPE: _____

QUANTITY: _____



PN: STR99

APPLICATION	<ul style="list-style-type: none">• WALL MOUNT• INDOOR OR OUTDOOR RATED
DIMENSION	<ul style="list-style-type: none">• 55"H X 18.2"W X 19.5"D (140CM X 46CM X 50CM)
ILLUMINATION	<ul style="list-style-type: none">• DIFFUSE• LED 90CRI• 5,163 - 9,251 LUMENS
ELECTRICAL	<ul style="list-style-type: none">• 120 - 277V (347V CONSULT FACTORY)• 10KA SURGE SUPPRESSION STANDARD
DIFFUSERS	<ul style="list-style-type: none">• HIGH EFFICIENCY ACRYLIC
MOUNTING	<ul style="list-style-type: none">• WALL, MOUNTED OVER A 4"(10CM) J-BOX
CONSTRUCTION	<ul style="list-style-type: none">• STEEL
FINISHES	<ul style="list-style-type: none">• AVAILABLE STAINLESS STEEL, POLISHED, OR BRUSHED
DIMMING	<ul style="list-style-type: none">• 0 - 10V STANDARD DIMMING





STROM™ CYLINDER

PROJECT: _____
 TYPE: _____
 QUANTITY: _____

STR99

1 2 3 4 5 6 7

1.	ILLUMINATION		
	84LED		
LED (W)	84W		
2.	---	UD	
UP/DOWN-LIGHT	NONE	19W UPLIGHT + 19W DOWNLIGHT	
LUMENS	5163	9251	
3.	30K	35K	40K
LED CCT	3000K	3500K	4000K
4.	120	277	
VOLTAGE	120V	277V	
5.	SS	PS	
FINISH	316L STAINLESS STEEL (BRUSHED)	316L STAINLESS STEEL (MIRROR POLISHED)	
6.	---	DIML	
DIMMING	NONE	LED DIMMING (0 - 10V, CURRENT - SINKING)	
7.	---	EMR	EMCR
EMERGENCY ²	NONE	REMOTE	REMOTE COLD PACK

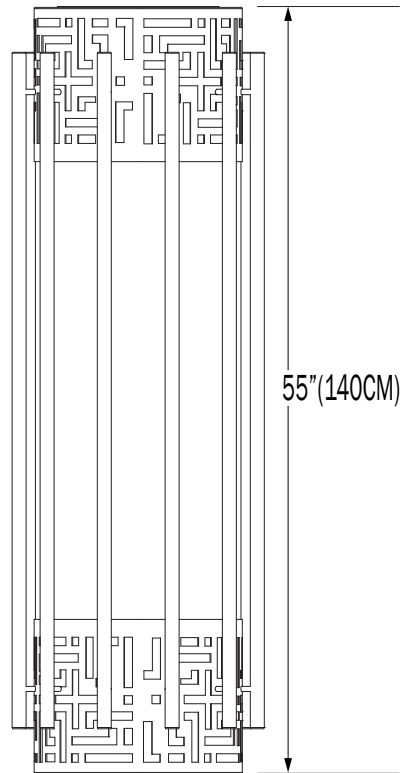
1. 10W AT 90 MINUTES
 2. LED EMERGENCY BACK-UP IS ONLY AVAILABLE WHEN THE 19W LED UPLIGHT/DOWNLIGHT OPTION IS SELECTED

NOTE: SOME OPTIONS MAY NOT BE COMPATIBLE WITH OTHERS. ALL SPECIFICATIONS ARE SUBJECT TO CHANGE WITHOUT NOTICE. CONTACT TMS LIGHTING FOR UPDATED SPECIFICATIONS.

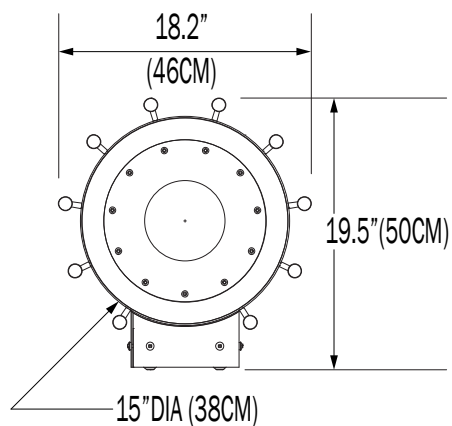
TMSLIGHTING



STR99



TOP/BOTTOM



CUSTOM

NOTE: THIS FIXTURE CAN BE CUSTOMIZE. DIMENSION, LAMP TYPES, ENCLOSURE, AND COLOR CAN BE MODIFIED TO SUIT YOUR LIGHTING AND ARCHITECTURAL REQUIREMENTS. CONTACT YOUR LOCAL REPRESENTATIVE FOR MORE DETAILS: <https://tmslighting.com/sales-agents.html>

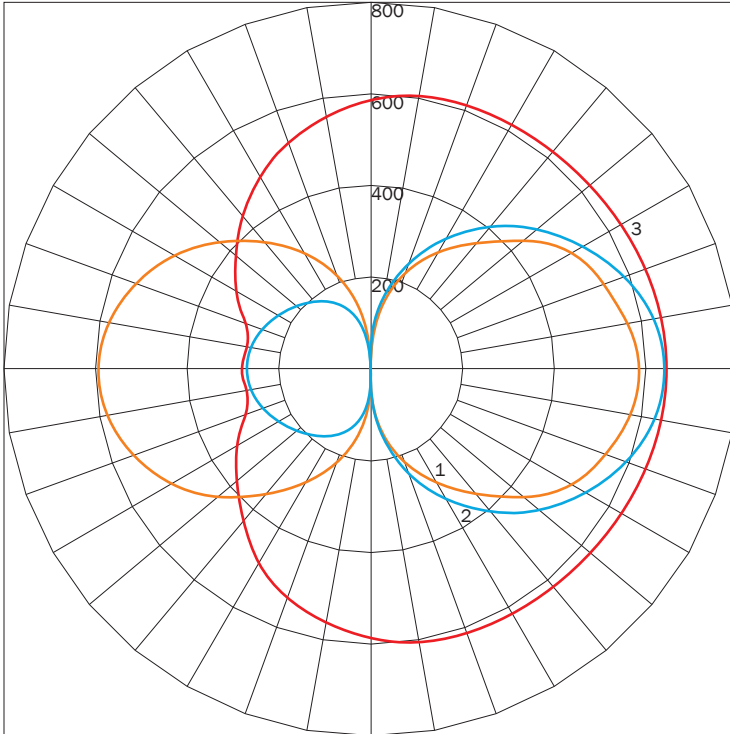
DIFFUSE

PN	UP/DOWNLIGHT	LUMENS	WATTAGE
STR99	---	5163	84

IES INDOOR REPORT

PHOTOMETRIC FILENAME : STR99 84LED PS 2.0.IES

POLAR GRAPH



MAXIMUM CANDELA = 646.08 LOCATED AT HORIZONTAL ANGLE = 45, VERTICAL ANGLE = 90
 # 1 - VERTICAL PLANE THROUGH HORIZONTAL ANGLES (90 - 270)
 # 2 - VERTICAL PLANE THROUGH HORIZONTAL ANGLES (0 - 180)
 # 3 - HORIZONTAL CONE THROUGH VERTICAL ANGLE (90)

LUMINAIRE LUMENS

5163

TOTAL LUMINAIRE EFFICIENCY

NA

LUMINAIRE EFFICACY RATING

53

TOTAL LUMINAIRE WATTS

97

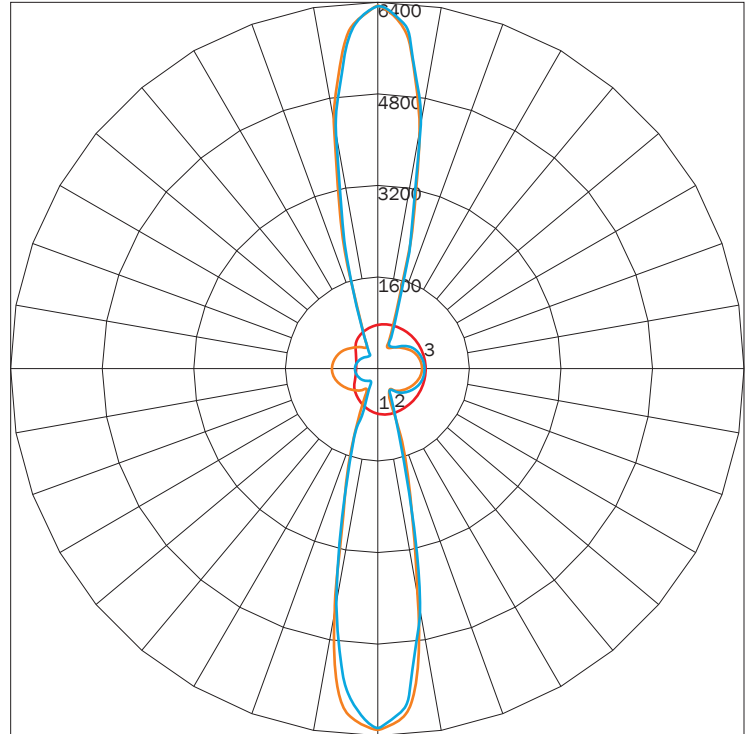
INDIRECT / DIRECT

PN	UP/DOWNLIGHT	LUMENS	WATTAGE
STR99	UD	9251	120

IES INDOOR REPORT

PHOTOMETRIC FILENAME : STR99 84LED UD US 2.0.IES

POLAR GRAPH



MAXIMUM CANDELA = 6364.62 LOCATED AT HORIZONTAL ANGLE = 0, VERTICAL ANGLE = 180
 # 1 - VERTICAL PLANE THROUGH HORIZONTAL ANGLES (90 - 270)
 # 2 - VERTICAL PLANE THROUGH HORIZONTAL ANGLES (0 - 180)
 # 3 - HORIZONTAL CONE THROUGH VERTICAL ANGLE (90)

LUMINAIRE LUMENS

9251

TOTAL LUMINAIRE EFFICIENCY

NA

LUMINAIRE EFFICACY RATING

66

TOTAL LUMINAIRE WATTS

140

AVAILABLE FINISHES



SS
316L
STAINLESS
STEEL
(BRUSHED)



PS
316L
STAINLESS
STEEL
(MIRROR POLISHED)

NOTE: DISPLAYED FINISHES DIFFER BETWEEN SCREENS AS WELL AS PRINTERS AND MAY NOT ACCURATELY DEPICT COLOR.