

PROJECT: \_\_\_\_\_

TYPE: \_\_\_\_\_

QUANTITY: \_\_\_\_\_



## PN: 1

<b>APPLICATION</b>	<ul style="list-style-type: none"> <li>• WALL MOUNT</li> <li>• INDOOR OR OUTDOOR RATED</li> </ul>
<b>DIMENSION</b>	<ul style="list-style-type: none"> <li>• 10" DIA (25CM)</li> </ul>
<b>ILLUMINATION</b>	<ul style="list-style-type: none"> <li>• DIRECT</li> <li>• LED 90CRI</li> <li>• 1,157 - 1,863 LUMENS</li> </ul>
<b>ELECTRICAL</b>	<ul style="list-style-type: none"> <li>• 120V, 277V AND 347V</li> <li>• 10kA SURGE SUPPRESSION STANDARD</li> </ul>
<b>DRIVER</b>	<ul style="list-style-type: none"> <li>• WALL MOUNT (INTEGRAL)</li> <li>• REMOTE MOUNT (INDOOR OR OUTDOOR)</li> </ul>
<b>DIFFUSERS</b>	<ul style="list-style-type: none"> <li>• CLEAR OR FROSTED GLASS GLOBE</li> </ul>
<b>MOUNTING</b>	<ul style="list-style-type: none"> <li>• WALL, MOUNTED OVER A 4"(10CM) J-BOX</li> </ul>
<b>CONSTRUCTION</b>	<ul style="list-style-type: none"> <li>• ALUMINUM W/ STAINLESS STEEL MOUNT</li> </ul>
<b>FINISHES</b>	<ul style="list-style-type: none"> <li>• AVAILABLE IN ANODIZED, BRUSHED, AND SEVERAL TMS POWDER COATED FINISHES</li> <li>• CUSTOM RAL FINISHES AVAILABLE</li> </ul>
<b>DIMMING</b>	<ul style="list-style-type: none"> <li>• 0 - 10V STANDARD DIMMING</li> </ul>



**DIRECT**



PROJECT: \_\_\_\_\_

TYPE: \_\_\_\_\_

QUANTITY: \_\_\_\_\_

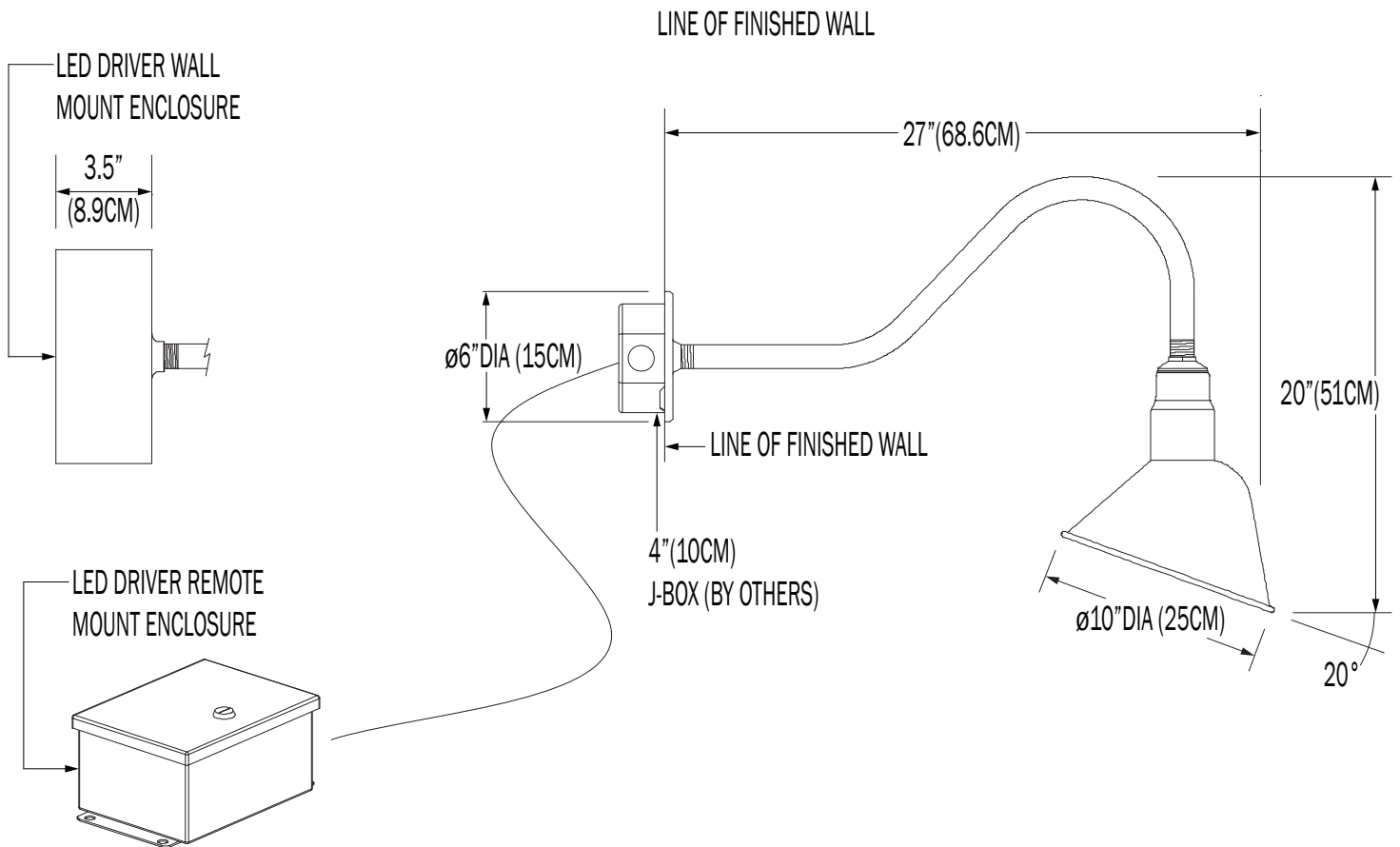
**1** - - - - - 1 - - - - - 2 - - - - - 3 - - - - - 4 - - - - - 5 - - - - - 6 - - - - - 7 - - - - - 8 - - - - - 9 - - - - - 10

1 ILLUMINATION												
		100IN <sup>1</sup>			15LED			17LED <sup>1</sup>		19LED		
LED (W)		100W			15W			17W PAR38 E26 MED. BASE, 4000L, 60°		19W		
LUMENS		1157			1396			---		1863		
		---			30K			35K		40K		
LED CCT		NONE			3000K			3500K		4000K		
		120			277			347				
VOLTAGE		120V			277V			347V				
		---			WM			N1		N4		
DRIVER		NONE			WALL MOUNT (INTEGRAL)			REMOTE INDOOR MOUNT (NEMA 1)		REMOTE OUTDOOR MOUNT (NEMA 4)		
5. FINISH <sup>2</sup>												
	<b>F04</b>	<b>F05</b>	<b>F15</b>	<b>F16</b>	<b>F09</b>	<b>F31</b>	<b>F18</b>	<b>F06</b>	<b>F07</b>	<b>F08</b>		
	MATTE WHITE	GLOSS WHITE	MATTE BLACK	GLOSS BLACK	PEWTER	SILVER METALLIC	SATIN ALUMINUM	CLAY BROWN	ZEUS BROWN	MIDNIGHT BLUE		
	<b>F10</b>	<b>F11</b>	<b>F13</b>	<b>F14</b>	<b>F21</b>	<b>F22</b>	<b>F24</b>	<b>F25</b>	<b>F26</b>	<b>F28</b>		
	FIRE RED	CITRUS ORANGE	FOREST GREEN	SUNSHINE YELLOW	ARCH. BRONZE	HARVEST GOLD	MELTED PLATINUM	MELTED GOLD	MELTED COPPER	DARK CAMPAGNE		
	<b>F32</b>	<b>F33</b>	<b>F38</b>	<b>F39</b>	<b>F40</b>	<b>F41</b>	<b>F42</b>	<b>F43</b>	<b>F44</b>	<b>F45</b>		
	BRONZE METALLIC	PYRITE BRONZE	MEADOW GREEN	AQUA BLUE	BUBBLE PINK	ELECTRIC PURPLE	FAUX CHROME	FAUX GOLD	FAUX COPPER	COPPER METALLIC		
	<b>RAL</b>	<b>BR</b>	<b>AN</b>									
	CUSTOM (SPECIFY RAL)	BRUSHED ALUMINUM	ANODIZED									
		---			DIML							
DIMMING		NONE			LED DIMMING (0 - 10V, CURRENT - SINKING)							
		---			EM		EMC		EMR		EMCR	
EMERGENCY <sup>3</sup>		NONE			INTEGRAL		INTEGRAL COLD PACK		REMOTE		REMOTE COLD PACK	
		---			G1				G2			
GLOBE/ <sup>4</sup> LENS		NONE			CLEAR, ELONGATED GLOBE				FROSTED GLOBE			
		---			W10							
WIRE GUARD		NONE			10" WIRE GUARD							
		---			AK							
ACCESSORIES		NONE			AIMING KNUCKLE							

1. INCANDESCENT SYSTEMS, AND 17W LED PAR 38 LAMPS, USE A MEDIUM BASE SOCKET (E26) 3. 10W AT 90 MINUTES. EMERGENCY OPTION IS ONLY AVAILABLE IN 120 - 277V SYSTEMS  
 2. REFLECTOR INSIDE IS FINISHED WHITE 4. GLOBES ARE NOT AVAILABLE WITH THE 17W LED PAR 38 LAMPS

NOTE: SOME OPTIONS MAY NOT BE COMPATIBLE WITH OTHERS. ALL SPECIFICATIONS ARE SUBJECT TO CHANGE WITHOUT NOTICE. CONTACT TMS LIGHTING FOR UPDATED SPECIFICATIONS.

1



## CUSTOM

NOTE: THIS FIXTURE CAN BE CUSTOMIZE. DIMENSION, LAMP TYPES, ENCLOSURE, AND COLOR CAN BE MODIFIED TO SUIT YOUR LIGHTING AND ARCHITECTURAL REQUIREMENTS. CONTACT YOUR LOCAL REPRESENTATIVE FOR MORE DETAILS: <https://tmslighting.com/sales-agents.html>

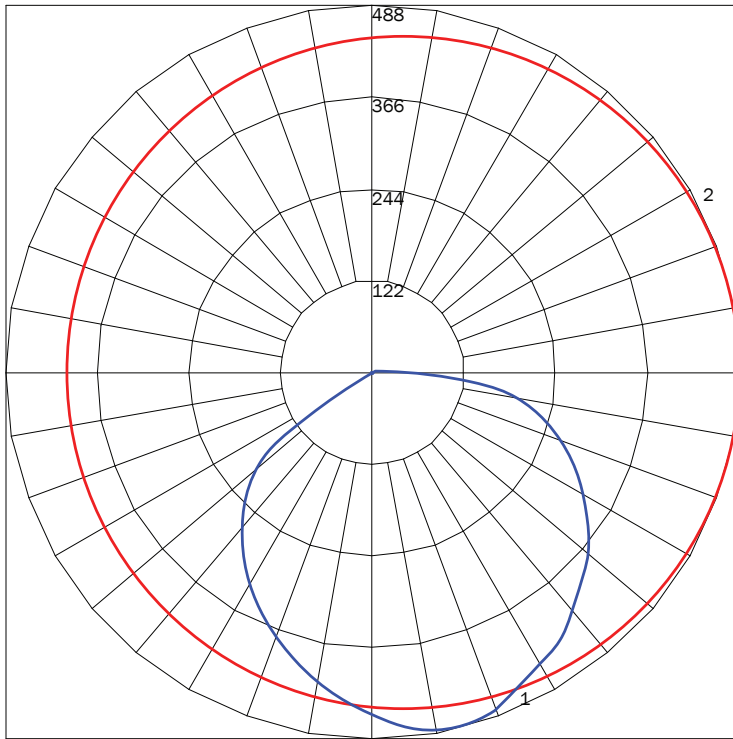
## DIRECT

PN	ILLUMINATION	LUMENS	WATTAGE
1	100IN	1157	100
	15LED	1396	15
	19LED	1863	19

### IES INDOOR REPORT

PHOTOMETRIC FILENAME : 1 15LED 35K WM F05.IES

### POLAR GRAPH



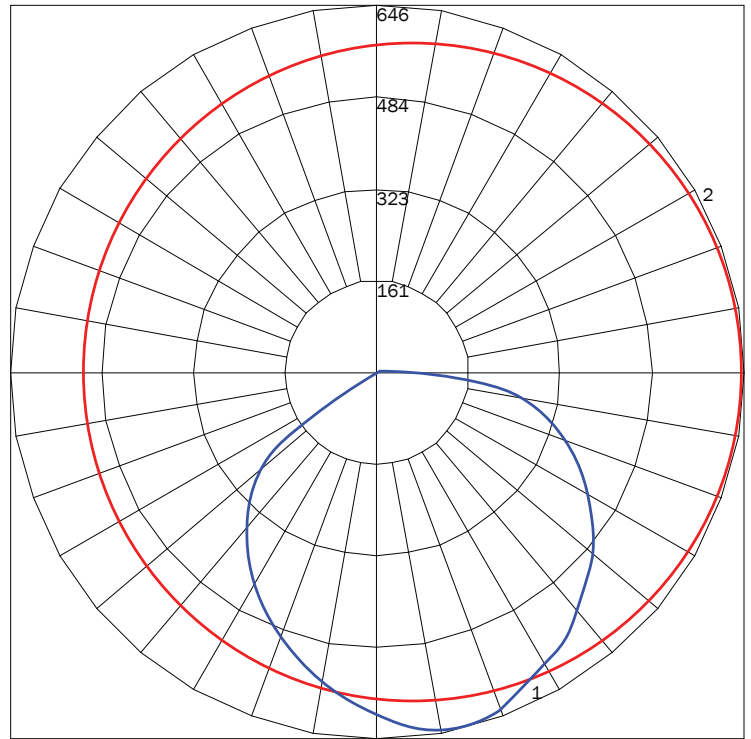
MAXIMUM CANDELA = 488.16 LOCATED AT HORIZONTAL ANGLE = 45, VERTICAL ANGLE = 10  
 # 1 - VERTICAL PLANE THROUGH HORIZONTAL ANGLES (45 - 225) (THROUGH MAX. CD.)  
 # 2 - HORIZONTAL CONE THROUGH VERTICAL ANGLE (10) (THROUGH MAX. CD.)

**LUMINAIRE LUMENS** 1396  
**TOTAL LUMINAIRE EFFICIENCY** 99%  
**LUMINAIRE EFFICACY RATING** 93  
**TOTAL LUMINAIRE WATTS** 15

### IES INDOOR REPORT

PHOTOMETRIC FILENAME : 1 19LED 35K WM F05.IES

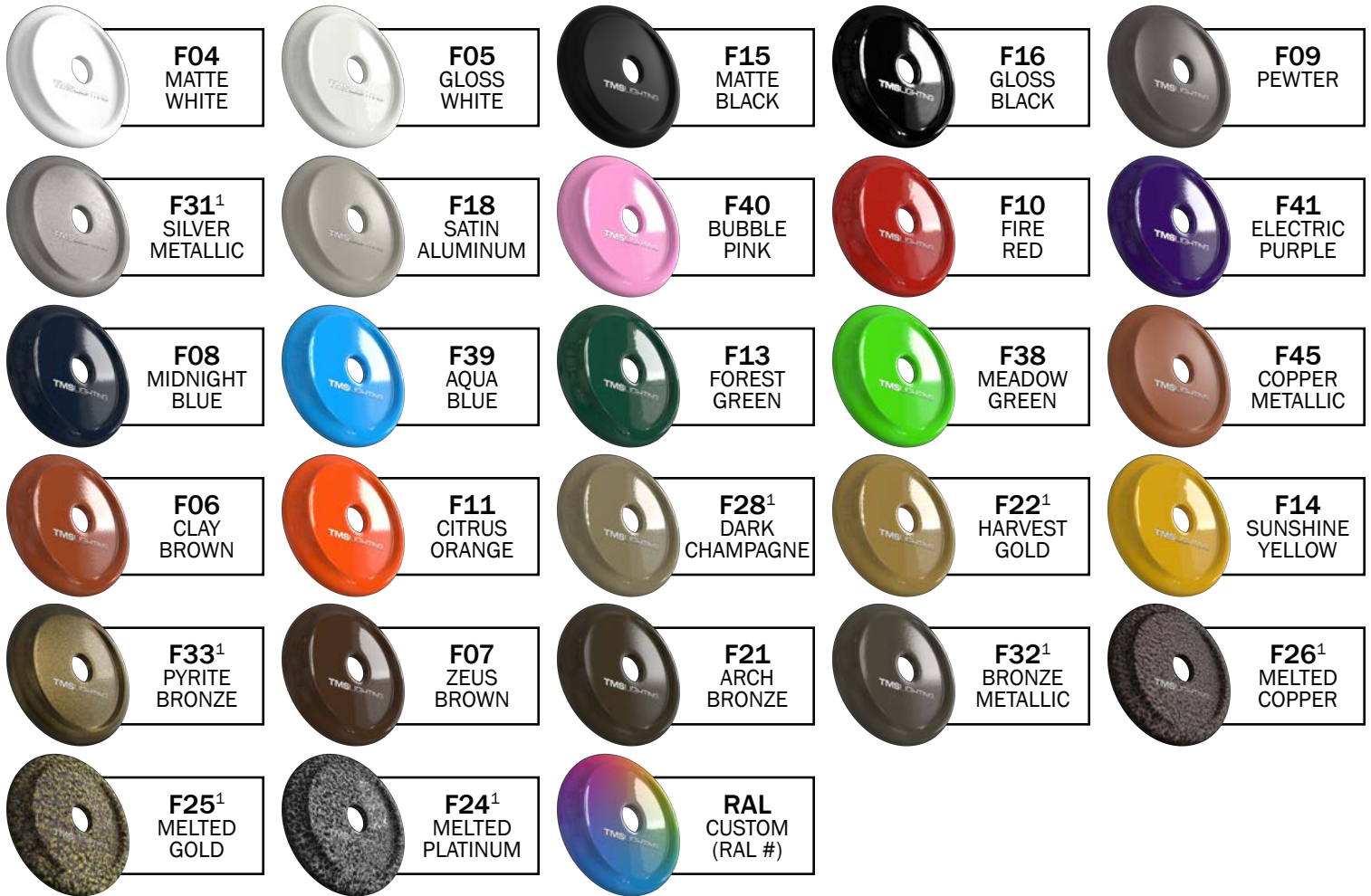
### POLAR GRAPH



MAXIMUM CANDELA = 645.67 LOCATED AT HORIZONTAL ANGLE = 45, VERTICAL ANGLE = 15  
 # 1 - VERTICAL PLANE THROUGH HORIZONTAL ANGLES (45 - 225) (THROUGH MAX. CD.)  
 # 2 - HORIZONTAL CONE THROUGH VERTICAL ANGLE (15) (THROUGH MAX. CD.)

**LUMINAIRE LUMENS** 1863  
**TOTAL LUMINAIRE EFFICIENCY** 99%  
**LUMINAIRE EFFICACY RATING** 93  
**TOTAL LUMINAIRE WATTS** 20

## FINISHES



## PREMIUM FINISHES



## PREMIUM MATERIALS



1: FINISHES IS APPLIED TO THE INTERIOR AND EXTERIOR OF THE FIXTURE.

2: MATERIALS ARE CONSISTENT (INTERIOR & EXTERIOR). STEMS AND CANOPIES WILL BE F16 GLOSS BLACK.

NOTE: ALL FINISHES NOT MARKED WITH NOTATION (1) ARE APPLIED TO THE EXTERIOR ONLY. THE INTERIOR WILL BE F05 GLOSS WHITE.

MATTE FINISHES AVAILABLE. CONSULT FACTORY.

FINISHES ARE SUBJECT TO AVAILABILITY AND MAY NOT BE APPLICABLE TO ALL FIXTURES OR FOR QUICKSHIP.

DISPLAYED FINISHES DIFFER BETWEEN SCREENS AS WELL AS PRINTERS AND MAY NOT ACCURATELY DEPICT COLOR.