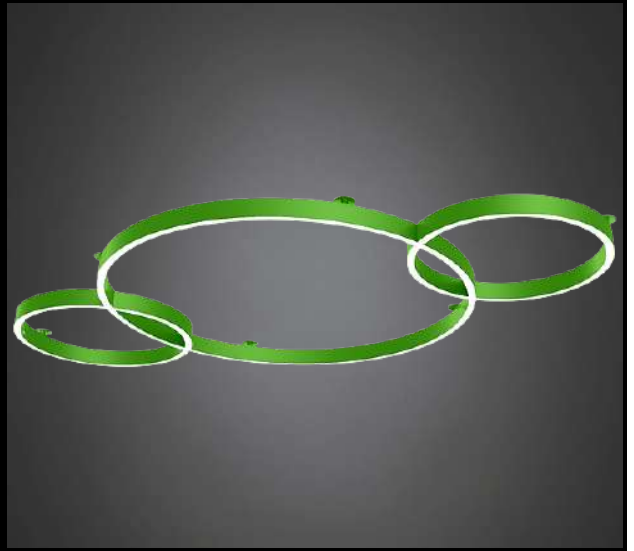


# LUNA FUSO L™ CEILING

PROJECT: \_\_\_\_\_

TYPE: \_\_\_\_\_

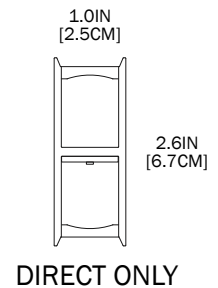
QUANTITY: \_\_\_\_\_



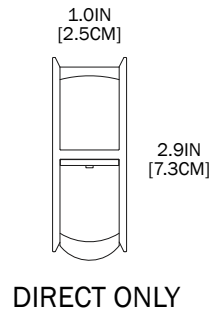
PN: 871LU03CL

<b>ILLUMINATION</b>	<ul style="list-style-type: none"> <li>• 10,743 LUMENS</li> <li>• DIRECT</li> <li>• LED 90CRI</li> </ul>
<b>APPLICATION</b>	<ul style="list-style-type: none"> <li>• CEILING MOUNT</li> <li>• INDOOR RATED</li> </ul>
<b>DIMENSION</b>	<ul style="list-style-type: none"> <li>• AVAILABLE IN 1 x 48" &amp; 2 x 24" DIAMETER</li> <li>• PROFILE: 1"W X 2.625"H (2.54cm X 6.6675cm)</li> </ul>
<b>ELECTRICAL</b>	<ul style="list-style-type: none"> <li>• 120 - 277V</li> <li>• 10KV SURGE SUPPRESSION</li> </ul>
<b>DIFFUSERS</b>	<ul style="list-style-type: none"> <li>• HIGH EFFICIENCY ACRYLIC</li> </ul>
<b>MOUNTING</b>	<ul style="list-style-type: none"> <li>• CANOPY MOUNTED OR REMOTE MOUNTED DRIVERS</li> </ul>
<b>CONSTRUCTION</b>	<ul style="list-style-type: none"> <li>• ALUMINUM</li> </ul>
<b>FINISHES</b>	<ul style="list-style-type: none"> <li>• AVAILABLE IN SEVERAL TMS POWDER COATED FINISHES</li> <li>• CUSTOM RAL FINISHES AVAILABLE</li> </ul>
<b>DIMMING</b>	<ul style="list-style-type: none"> <li>• 0 - 10V (1%) DIMMING (120-277V)</li> <li>• LINE VOLTAGE/TRIAC/ELV (120V ONLY)</li> </ul>
<b>WEIGHT</b>	<ul style="list-style-type: none"> <li>• 30 LBS MAXIMUM</li> </ul>

## FLAT DIFFUSER



## DOM DIFFUSER



# LUNA FUSO L™ CEILING



PROJECT: \_\_\_\_\_

TYPE: \_\_\_\_\_

QUANTITY: \_\_\_\_\_

**871LU03CL** - 1 - 2 - 3 - 4 - 5 - 6 - 7

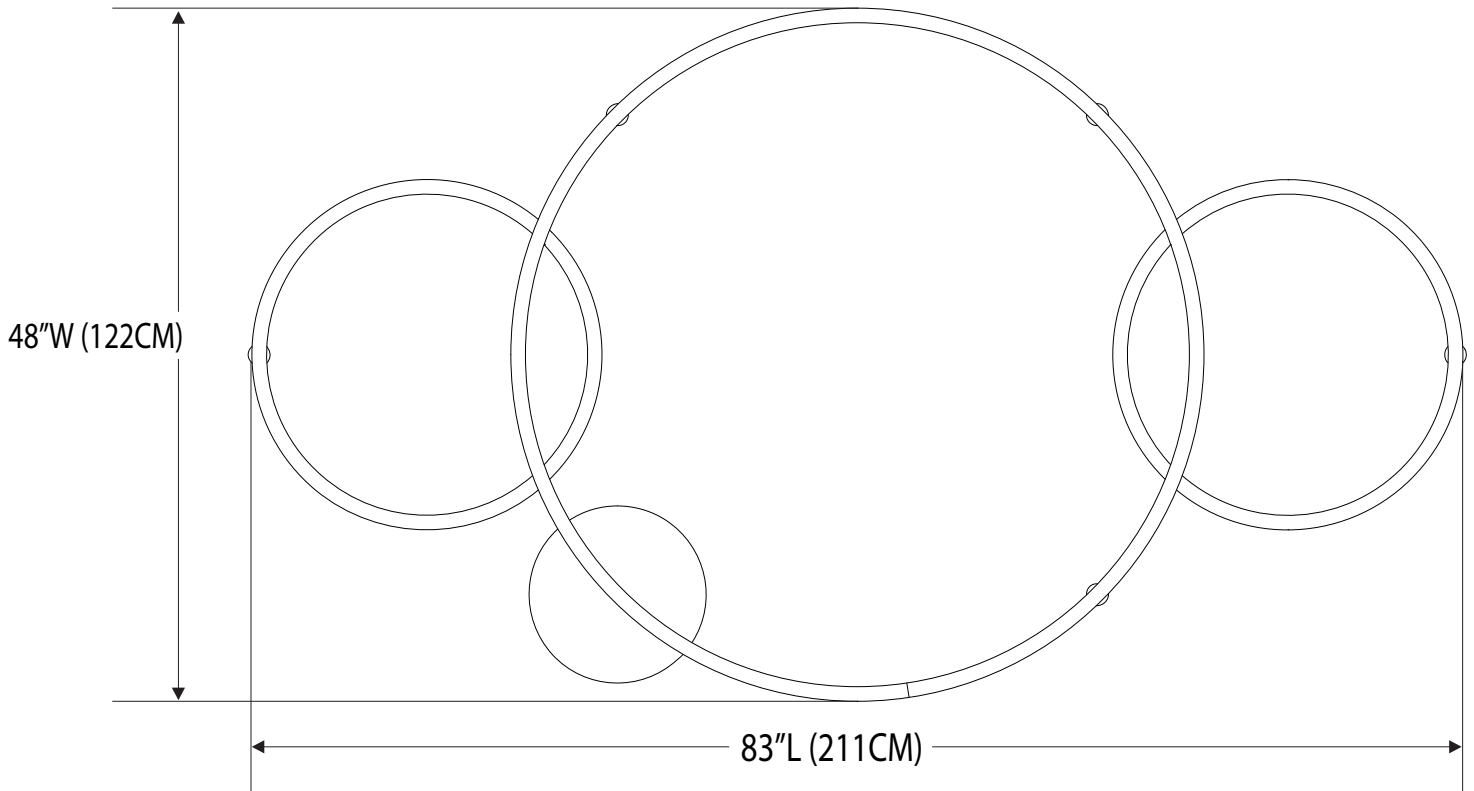
<b>1.</b>	<b>DIRECT</b>							
PN	<b>242D</b>							
L"xW"	83x48							
LED	118							
LUMENS	10743							
<b>2.</b>	<b>H</b>	<b>M</b>		<b>L</b>		<b>C</b> <sup>1</sup>		
OUTPUT	100% LUMEN OUTPUT	75% LUMEN OUTPUT		50% LUMEN OUTPUT		[CUSTOM] % LUMEN OUTPUT		
<b>3.</b>	<b>30K</b>		<b>35K</b>		<b>40K</b>			
CCT	3000		3500		4000			
<b>4.</b>	<b>CD</b>				<b>RM</b>			
MOUNTING	CANOPY MOUNT				REMOTE MOUNT			
<b>5.</b>	<b>FLAT</b>				<b>DOM</b>			
DIFFUSER	FLAT DIFFUSER				DOME DIFFUSER			
<b>6.</b>	<b>ADDITIONAL AND PREMIUM FINISHES AVAILABLE. SEE FINISHES CHART</b>	<b>F04</b>	<b>F05</b>	<b>F15</b>	<b>F16</b>	<b>F09</b>	<b>F31</b>	<b>F18</b>
FINISH		MATTE WHITE	GLOSS WHITE	MATTE BLACK	GLOSS BLACK	PEWTER	SILVER METALLIC	SATIN ALUMINUM
<b>7.<sup>2</sup></b>	<b>DIML</b>				<b>DIMV</b>			
DIMMING	0-10V (1%) (120-277V)				LINE VOLTAGE/TRIAC/ELV (120V ONLY)			

1. CUSTOM PERCENTAGE I.E. 60% CONSULT FACTORY.

2. LUTRON DIMMING OPTION IS AVAILABLE FOR CUSTOM BUILDS.

NOTE: SOME OPTIONS MAY NOT BE COMPATIBLE WITH OTHERS. **ALL SPECIFICATIONS ARE SUBJECT TO CHANGE WITHOUT NOTICE.** CONTACT TMS LIGHTING FOR UPDATED SPECIFICATIONS.

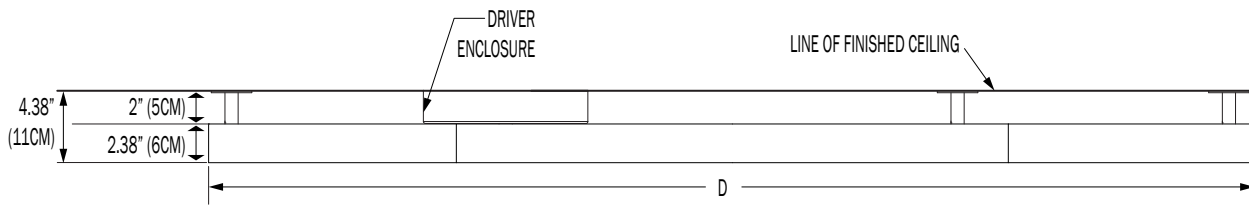
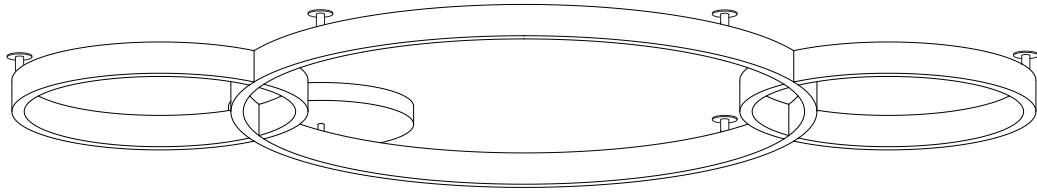
# LUNA FUSO L™ CEILING



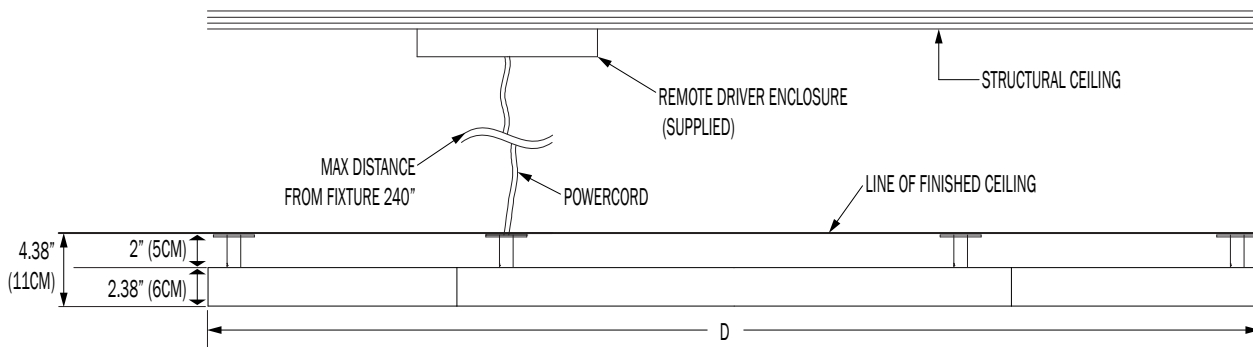
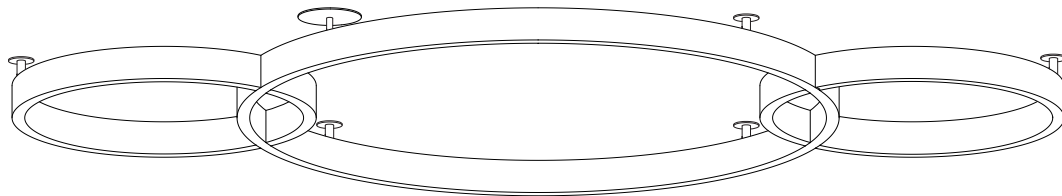
SIZE	ACTUAL SIZE	MOUNTING POINTS	CANOPY SIZE	NUMBER OF CANOPY	WEIGHT (POUNDS - LBS)	SECTIONS
242	48"W x 83"L	6	12"	1	30	1

## MOUNTING

### CD (CANOPY MOUNT DRIVER)



### RM (REMOTE MOUNT DRIVER)



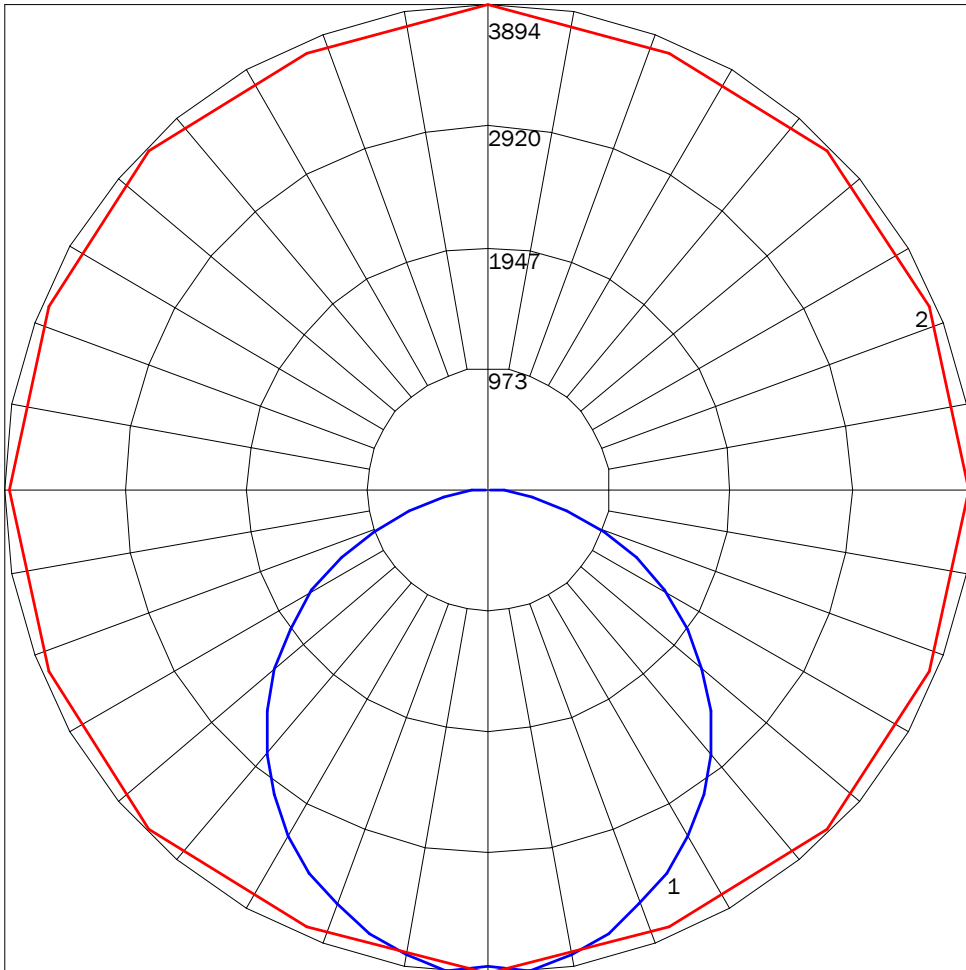
## DIRECT

PN	LUMENS	WATTAGE
242D	10743	118

### IES INDOOR REPORT

PHOTOMETRIC FILENAME : 871LU03CL-84-D-35K-F05.IES

### POLAR GRAPH



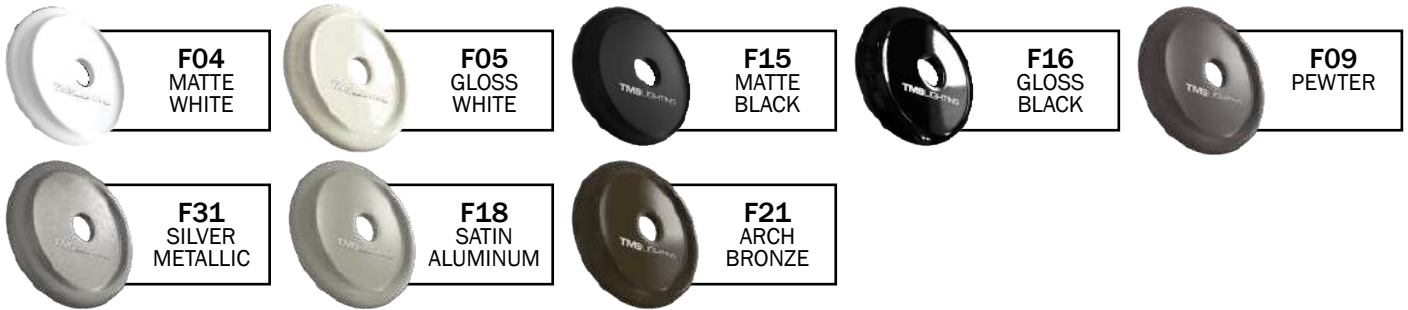
MAXIMUM CANDELA = 3893.9 LOCATED AT HORIZONTAL ANGLE = 90, VERTICAL ANGLE = 5

# 1 - VERTICAL PLANE THROUGH HORIZONTAL ANGLES (90 - 270) (THROUGH MAX. CD.)

# 2 - HORIZONTAL CONE THROUGH VERTICAL ANGLE (5) (THROUGH MAX. CD.)

<b>LUMINAIRE LUMENS</b>	10743
<b>TOTAL LUMINAIRE EFFICIENCY</b>	71%
<b>LUMINAIRE EFFICIENCY RATING</b>	91
<b>TOTAL LUMINAIRE WATTS</b>	118

## FINISHES



## PREMIUM FINISHES



DISPLAYED FINISHES DIFFER BETWEEN SCREENS AS WELL AS PRINTERS AND MAY NOT ACCURATELY DEPICT COLOR.