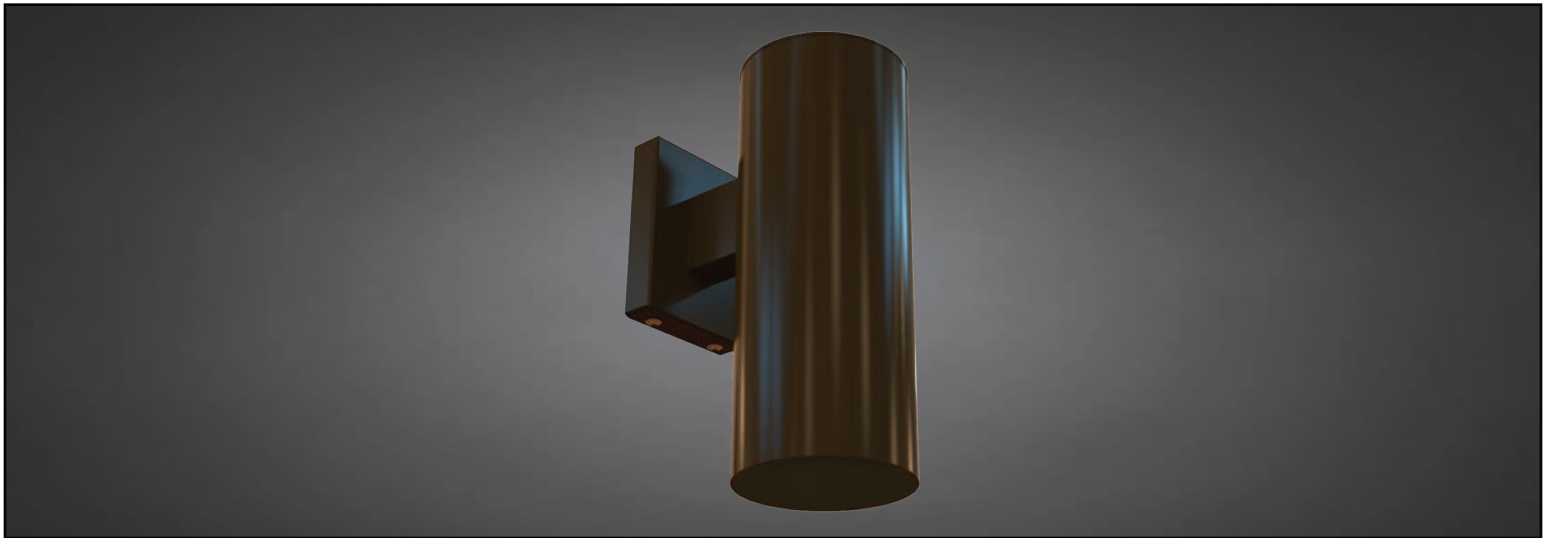


# DOWNLIGHT CYLINDER™ CYLINDER

PROJECT: \_\_\_\_\_

TYPE: \_\_\_\_\_

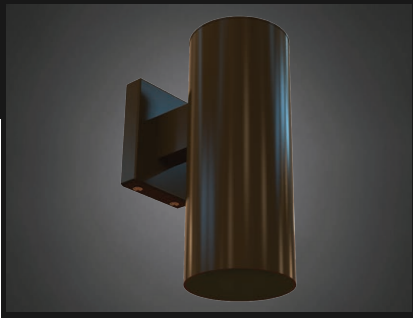
QUANTITY: \_\_\_\_\_



PN: CYW

<b>APPLICATION</b>	<ul style="list-style-type: none"><li>• WALL MOUNT</li><li>• INDOOR OR OUTDOOR RATED</li></ul>
<b>DIMENSION</b>	<ul style="list-style-type: none"><li>• 6" DIA OR 8" DIA (15CM OR 20CM)</li></ul>
<b>ILLUMINATION</b>	<ul style="list-style-type: none"><li>• DIRECT</li><li>• LED 90CRI</li><li>• 463 - 2,907 LUMENS</li></ul>
<b>ELECTRICAL</b>	<ul style="list-style-type: none"><li>• 120V, 277V, AND 347V</li><li>• 10kA SURGE SUPPRESSION STANDARD</li></ul>
<b>DIFFUSERS</b>	<ul style="list-style-type: none"><li>• HIGH EFFICIENCY ACRYLIC</li></ul>
<b>MOUNTING</b>	<ul style="list-style-type: none"><li>• WALL, MOUNTED OVER A 4"(10CM) J-BOX</li></ul>
<b>CONSTRUCTION</b>	<ul style="list-style-type: none"><li>• ALUMINUM</li></ul>
<b>FINISHES</b>	<ul style="list-style-type: none"><li>• AVAILABLE IN SEVERAL TMS POWDER COATED FINISHES</li><li>• CUSTOM RAL FINISHES AVAILABLE</li></ul>
<b>DIMMING</b>	<ul style="list-style-type: none"><li>• 0 - 10V STANDARD DIMMING</li></ul>
<b>WEIGHT</b>	<ul style="list-style-type: none"><li>• 9 LBS MAXIMUM</li></ul>





# DOWNLIGHT CYLINDER™ CYLINDER

PROJECT: \_\_\_\_\_

TYPE: \_\_\_\_\_

QUANTITY: \_\_\_\_\_

**CYW** - - - - - 1 - - - - - 2 - - - - - 3 - - - - - 4 - - - - - 5 - - - - - 6 - - - - - 7 - - - - - 8 - - - - - 9

<b>1.</b>	<b>I</b>					<b>O</b>					
APPLICATION	INDOOR					OUTDOOR					
<b>2.</b>	<b>6</b>					<b>8</b>					
DIAMETER	6"DIA (15CM)					8"DIA (20CM)					
<b>3.</b>											
ILLUMINATION	<b>100IN<sup>1</sup></b>	<b>15LED</b>	<b>17LED<sup>1</sup></b>	<b>19LED</b>	<b>32LED</b>	<b>100IN<sup>1</sup></b>	<b>150IN<sup>1</sup></b>	<b>15LED</b>	<b>17LED<sup>1</sup></b>	<b>19LED</b>	<b>32LED</b>
LED (W)	100W	15W	PAR38 E26 MED. BASE, 4000K, 60°	19W	32W	100W	150W	15W	PAR38 E26 MED. BASE, 4000K, 60°	19W	32W
LUMENS	843	1045	---	1874	2631	463	719	1087	---	1856	2907
<b>4.</b>	---		<b>30K</b>			<b>35K</b>			<b>40K</b>		
LED CCT	NONE		3000K			3500K			4000K		
<b>5.</b>	<b>120</b>			<b>277</b>				<b>347</b>			
VOLTAGE	120V			277V				347V			
<b>6.</b>	<b>F04</b>	<b>F05</b>	<b>F08</b>	<b>F09</b>	<b>F10</b>	<b>F13</b>	<b>F14</b>	<b>F15</b>	<b>F16</b>	<b>F18</b>	
FINISH	MATTE WHITE	GLOSS WHITE	MIDNIGHT BLUE	PEWTER	FIRE RED	FOREST GREEN	SUNSHINE YELLOW	MATTE BLACK	GLOSS BLACK	SATIN ALUMINUM	
	<b>F21</b>	<b>F24</b>	<b>F25</b>	<b>F26</b>	<b>F31</b>	<b>F32</b>	<b>F33</b>	<b>RAL</b>			
	ARCH BRONZE	MELTED PLATINUM	MELTED GOLD	MELTED COPPER	SILVER METALLIC	BRONZE METALLIC	PYRITE BRONZE	CUSTOM (SPECIFY)			
<b>7.</b>	---					<b>DIML</b>					
DIMMING	NONE					LED DIMMING (0 - 10V, CURRENT - SINKING)					
<b>8.</b>	---			<b>EMR</b>				<b>EMCR</b>			
EMERGENCY <sup>2</sup>	NONE			REMOTE				REMOTE COLD PACK			
<b>9.</b>	---			<b>BFL</b>				<b>GLS</b>			
ACCESSORIES	NONE			ANTI - GLARE BAFFLE				GLASS LENS			

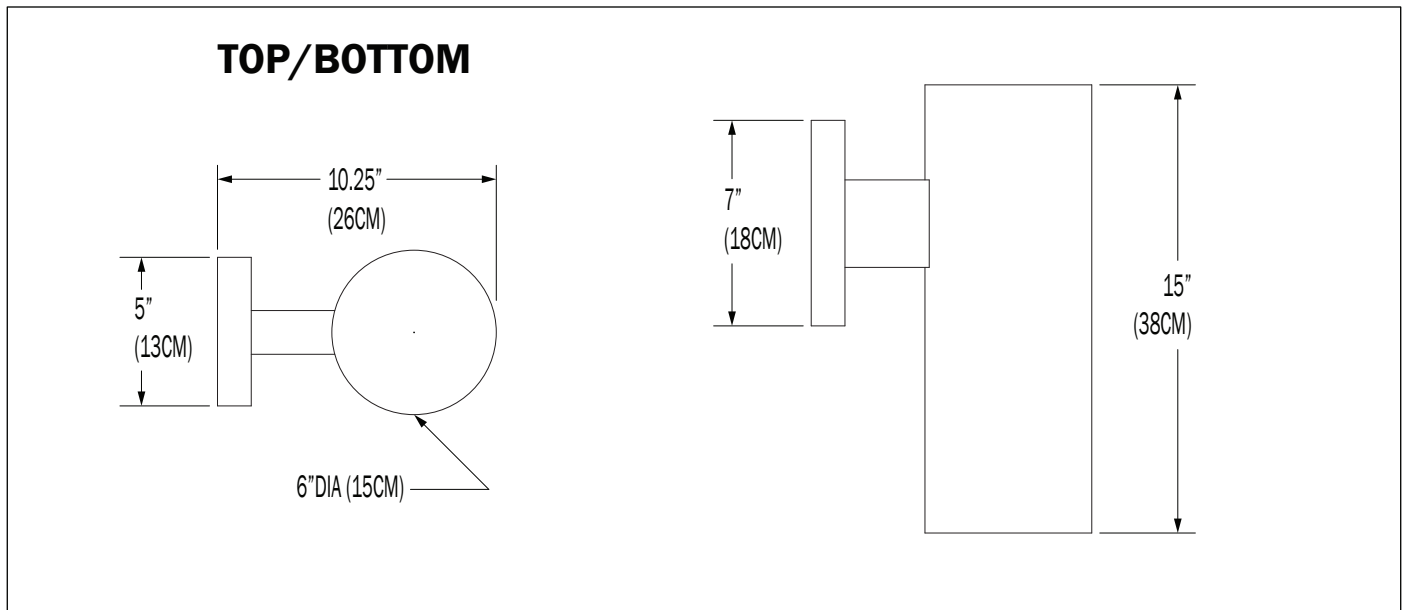
1. INCANDESCENT AND METAL HALIDE SYSTEMS, AND THOSE USING THE 17 LED PAR 38 LAMPS, USES A MEDIUM BASE SOCKET (E26)  
 2. 10W AT 90 MINUTES. EMERGENCY OPTION IS ONLY AVAILABLE IN 120 - 277 SYSTEMS

NOTE: SOME OPTIONS MAY NOT BE COMPATIBLE WITH OTHERS. ALL SPECIFICATIONS ARE SUBJECT TO CHANGE WITHOUT NOTICE. CONTACT TMS LIGHTING FOR UPDATED SPECIFICATIONS.

# DOWNLIGHT CYLINDER™ CYLINDER

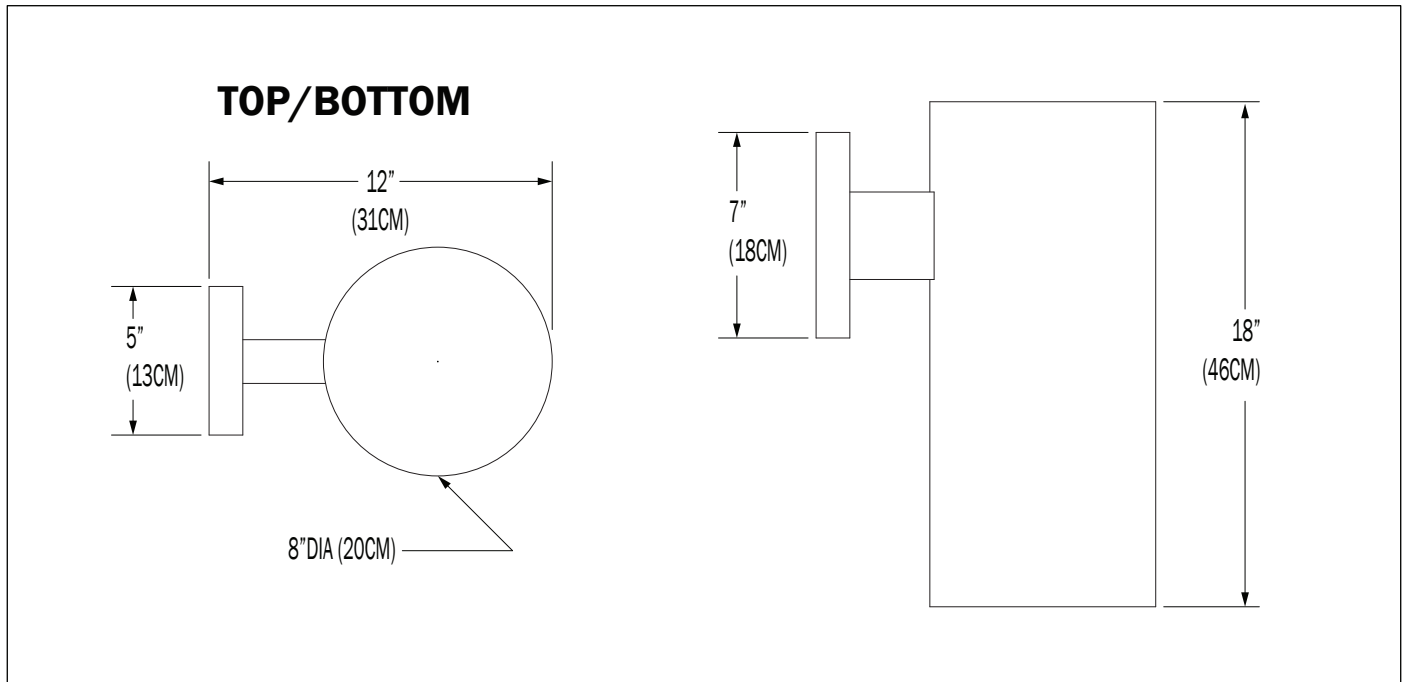
## CYW - 6"

6LB



## CYW - 8"

9LB



### CUSTOM

NOTE: THIS FIXTURE CAN BE CUSTOMIZE. DIMENSION, LAMP TYPES, ENCLOSURE, AND COLOR CAN BE MODIFIED TO SUIT YOUR LIGHTING AND ARCHITECTURAL REQUIREMENTS. CONTACT YOUR LOCAL REPRESENTATIVE FOR MORE DETAILS: <https://tmslighting.com/sales-agents.html>

# DOWNLIGHT CYLINDER™ CYLINDER

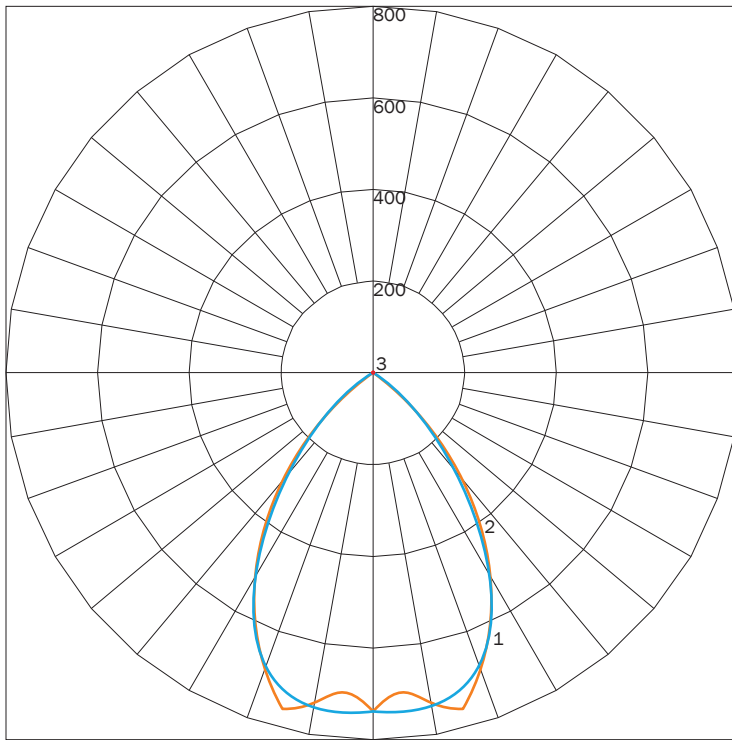
## DIFFUSE

PN	SIZE (DIA)	ILLUMINATION	LUMENS	WATTAGE
CYW	6D	100 IN	843	100
		15 LED	1045	15
		19 LED	1820	19
		32 LED	2781	32
	8D	100 IN	463	100
		150 IN	719	150
		15 LED	1087	15
		19 LED	1856	19
		32 LED	2907	32

### IES INDOOR REPORT

PHOTOMETRIC FILENAME : CYW 6 15LED F05.IES

### POLAR GRAPH



MAXIMUM CANDELA = 762.82 LOCATED AT HORIZONTAL ANGLE = 165, VERTICAL ANGLE = 15  
 # 1 - VERTICAL PLANE THROUGH HORIZONTAL ANGLES (90 - 270)  
 # 2 - VERTICAL PLANE THROUGH HORIZONTAL ANGLES (0 - 180)  
 # 3 - HORIZONTAL CONE THROUGH VERTICAL ANGLE (90)

**LUMINAIRE LUMENS**

1045

**TOTAL LUMINAIRE EFFICIENCY**

NA

**LUMINAIRE EFFICACY RATING**

61

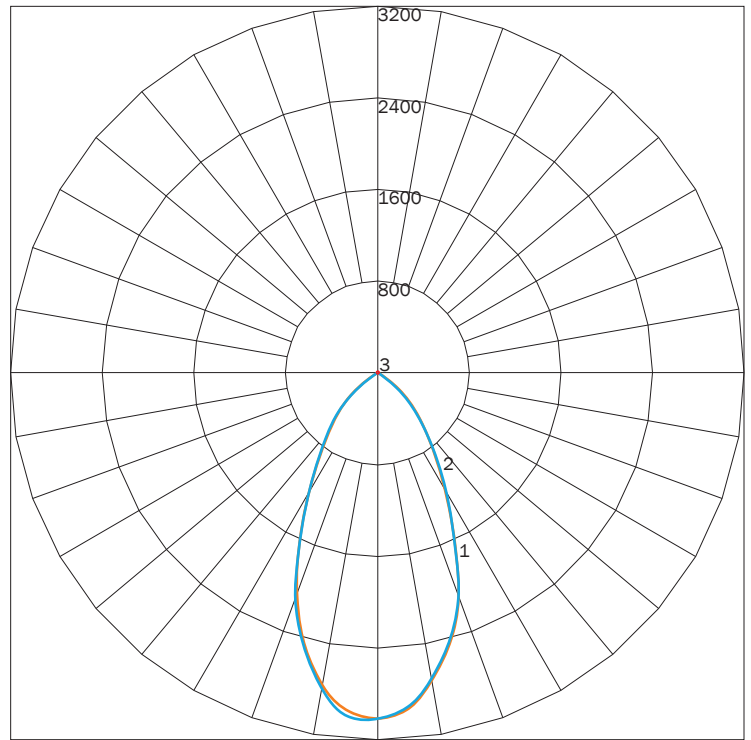
**TOTAL LUMINAIRE WATTS**

17

### IES INDOOR REPORT

PHOTOMETRIC FILENAME : CYW 8 32LED.IES

### POLAR GRAPH



MAXIMUM CANDELA = 3061.9 LOCATED AT HORIZONTAL ANGLE = 135, VERTICAL ANGLE = 5  
 # 1 - VERTICAL PLANE THROUGH HORIZONTAL ANGLES (90 - 270)  
 # 2 - VERTICAL PLANE THROUGH HORIZONTAL ANGLES (0 - 180)  
 # 3 - HORIZONTAL CONE THROUGH VERTICAL ANGLE (90)

**LUMINAIRE LUMENS**

2907

**TOTAL LUMINAIRE EFFICIENCY**

NA

**LUMINAIRE EFFICACY RATING**

81

**TOTAL LUMINAIRE WATTS**

15

# DOWNLIGHT CYLINDER™ CYLINDER

## AVAILABLE FINISHES



**F04**  
MATTE  
WHITE



**F05**  
GLOSS  
WHITE



**F08**  
MIDNIGHT  
BLUE



**F09**  
PEWTER



**F10**  
FIRE  
RED



**F13**  
FOREST  
GREEN



**F14**  
SUNSHINE  
YELLOW



**F15**  
MATTE  
BLACK



**F16**  
GLOSS  
BLACK



**F18**  
SATIN  
ALUMINUM



**F21**  
ARCH  
BRONZE



**F24**  
MELTED  
PLATINUM



**F25**  
MELTED  
GOLD



**F26**  
MELTED  
COPPER



**F31**  
SILVER  
METALLIC



**F32**  
METALLIC  
BRONZE



**F33**  
PYRITE  
BRONZE



**RAL**  
CUSTOM  
COLOR  
(RAL #)

NOTE: DISPLAYED FINISHES DIFFER BETWEEN SCREENS AS WELL AS PRINTERS AND MAY NOT ACCURATELY DEPICT COLOR.