

PROJECT: _____

TYPE: _____

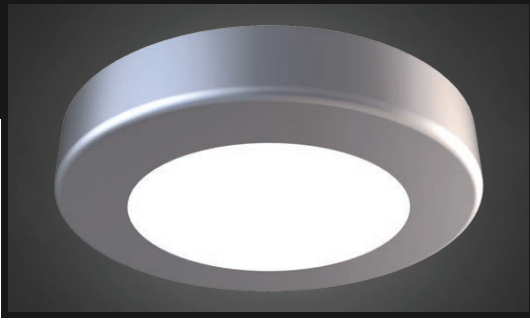
QUANTITY: _____



PN: AR901

APPLICATION	<ul style="list-style-type: none"> • CEILING • INDOOR RATED
DIMENSION	<ul style="list-style-type: none"> • 12" AND 25" (30CM, 64CM)
ILLUMINATION	<ul style="list-style-type: none"> • DIRECT • LED 90CRI • 1,187 - 4,774 LUMENS
ELECTRICAL	<ul style="list-style-type: none"> • 120 - 277V (347V CONSULT FACTORY) • 10KA SURGE SUPPRESSION STANDARD
DIFFUSERS	<ul style="list-style-type: none"> • HIGH EFFICIENCY ACRYLIC
MOUNTING	<ul style="list-style-type: none"> • CEILING, MOUNTED TO A 4"(10CM) J-BOX
CONSTRUCTION	<ul style="list-style-type: none"> • ALUMINUM
FINISHES	<ul style="list-style-type: none"> • AVAILABLE IN SEVERAL TMS PLATED, AND POWDER COATED FINISHES • CUSTOM RAL FINISHES AVAILABLE
DIMMING	<ul style="list-style-type: none"> • 0 - 10V STANDARD DIMMING (1%)
WEIGHT	<ul style="list-style-type: none"> • 13.5 LBS MAXIMUM





PROJECT: _____

TYPE: _____

QUANTITY: _____

AR901

1 2 3 4 5 6 7

1.	12	25
DIAMETER	12"DIA (31CM)	25"DIA (64)
LED (W)	19W	54W
DIFFUSER	OP SD	OP SD
LUMENS	1187 1440	3523 4774

2.	30K	35K	40K
LED CCT	3000	3500	4000

3.	120	277
VOLTAGE	120V	277V

4.	SN	CH	BC	AC	AB	SB	PB	F04	F05	F09
FINISH	SATIN NICKEL	CHROME	BLACK CHROME	ANTIQUÉ COPPER	ANTIQUÉ BRASS	SATIN BRASS	POLISHED BRASS	MATTE WHITE	GLOSS WHITE	PEWTER
	F15	F16	F18	F24	F25	F26	F31	F33	RAL	
	MATTE BLACK	GLOSS BLACK	SATIN ALUMINUM	MELTED PLATINUM	MELTED GOLD	MELTED COPPER	SILVER METALILIC	PYRITE BRONZE	CUSTOM (SPECIFY)	

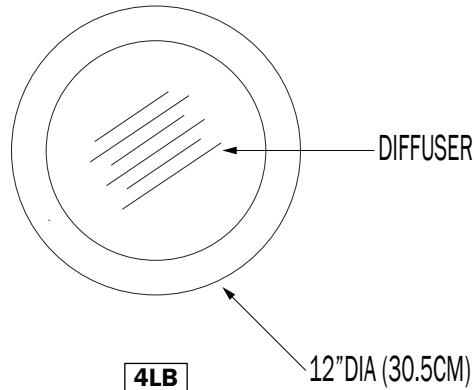
5.	OP	SD
DIFFUSER	OPAL - WHITE ACRYLIC	SAND - BLASTED WHITE

6.	DIML
DIMMING	LED DIMMING (0 - 10V, CURRENT - SINKING)

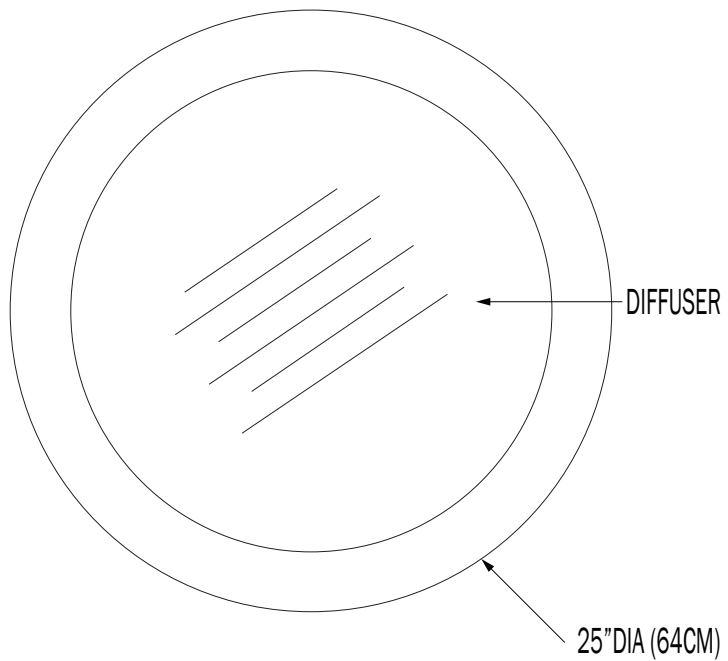
7.	---	EMR
EMERGENCY ¹	NONE	REMOTE

1. 10W AT 90 MINUTES

NOTE: SOME OPTIONS MAY NOT BE COMPATIBLE WITH OTHERS. ALL SPECIFICATIONS ARE SUBJECT TO CHANGE WITHOUT NOTICE. CONTACT TMS LIGHTING FOR UPDATED SPECIFICATIONS.



4LB
12D



13.5LB
25D

CUSTOM

NOTE: THIS FIXTURE CAN BE CUSTOMIZE. DIMENSION, LAMP TYPES, ENCLOSURE, AND COLOR CAN BE MODIFIED TO SUIT YOUR LIGHTING AND ARCHITECTURAL REQUIREMENTS. CONTACT YOUR LOCAL REPRESENTATIVE FOR MORE DETAILS: <https://tmslighting.com/sales-agents.html>

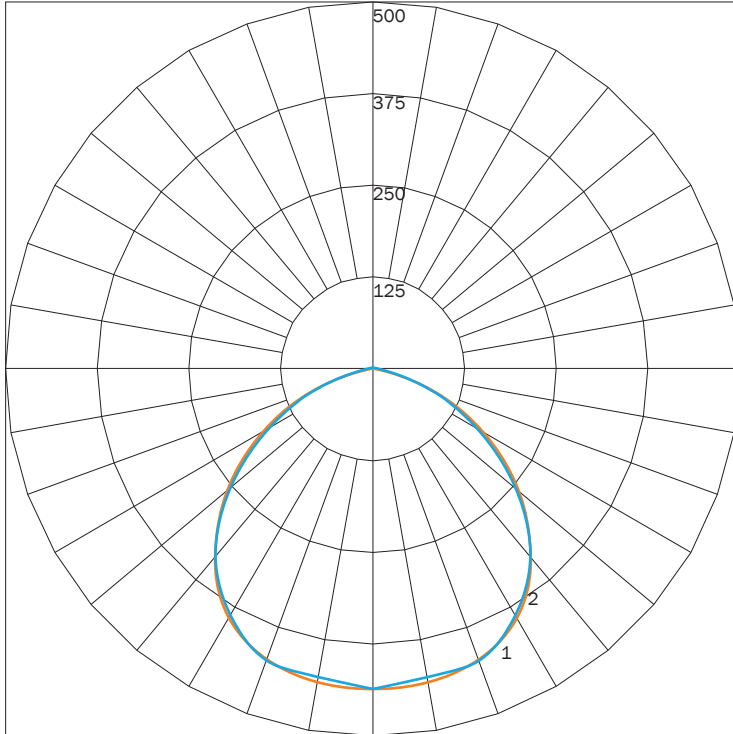
DIRECT

PN	SIZE (DIA)	LED	DIFFUSER	LUMENS	WATTAGE
AR901	12D	19LED	OP	1187	19
			SD	1440	19
	25D	54LED	OP	3523	54
			SD	4774	54

IES INDOOR REPORT

PHOTOMETRIC FILENAME : AR901 12 19LED F05 OP.IES

POLAR GRAPH



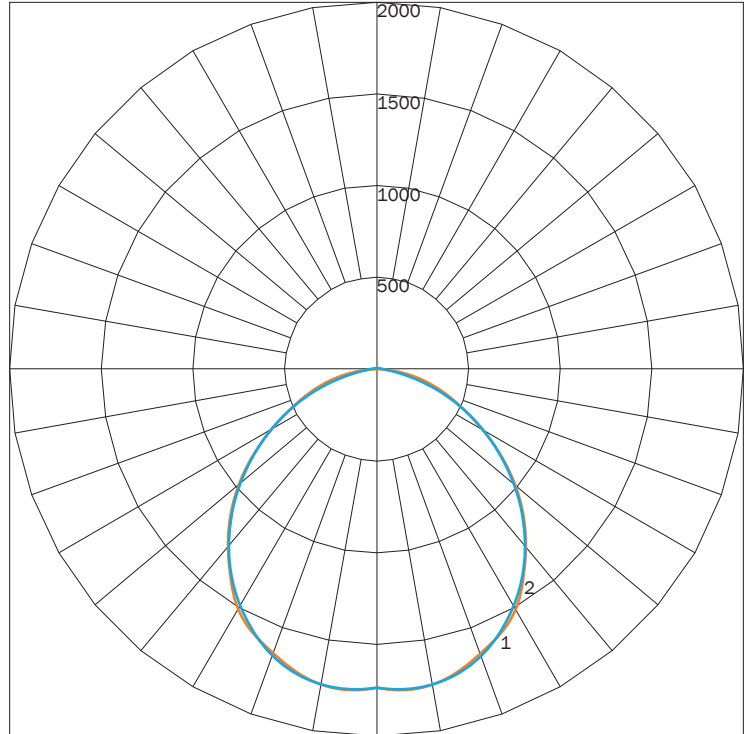
MAXIMUM CANDELA = 447.27 LOCATED AT HORIZONTAL ANGLE = 75, VERTICAL ANGLE = 5
 # 1 - VERTICAL PLANE THROUGH HORIZONTAL ANGLES (90 - 270)
 # 2 - VERTICAL PLANE THROUGH HORIZONTAL ANGLES (0 - 180)

LUMINAIRE LUMENS	1187
TOTAL LUMINAIRE EFFICIENCY	NA
LUMINAIRE EFFICACY RATING	55
TOTAL LUMINAIRE WATTS	22

IES INDOOR REPORT

PHOTOMETRIC FILENAME : AR901 25 54LED F05 SB.IES

POLAR GRAPH



MAXIMUM CANDELA = 1782.8 LOCATED AT HORIZONTAL ANGLE = 30, VERTICAL ANGLE = 5
 # 1 - VERTICAL PLANE THROUGH HORIZONTAL ANGLES (90 - 270)
 # 2 - VERTICAL PLANE THROUGH HORIZONTAL ANGLES (0 - 180)

LUMINAIRE LUMENS	4774
TOTAL LUMINAIRE EFFICIENCY	NA
LUMINAIRE EFFICACY RATING	78
TOTAL LUMINAIRE WATTS	61

AVAILABLE FINISHES



SN
SATIN
NICKEL



CH
CHROME



BC
BLACK
CHROME



AC
ANTIQUE
COPPER



AB
ANTIQUE
BRASS



SB
SATIN
BRASS



PB
POLISHED
BRASS



F04
MATTE
WHITE



F05
GLOSS
WHITE



F09
PEWTER



F15
MATTE
BLACK



F16
GLOSS
BLACK



F18
SATIN
ALUMINUM



F24
MELTED
PLATINUM



F25
MELTED
GOLD



F26
MELTED
COPPER



F31
SILVER
METALLIC



F33
PYRITE
BRONZE



RAL
CUSTOM
COLOR
(RAL #)

NOTE: DISPLAYED FINISHES DIFFER BETWEEN SCREENS AS WELL AS PRINTERS AND MAY NOT ACCURATELY DEPICT COLOR.